

MINGUS TWENTY

LIMITED EDITION OF 20

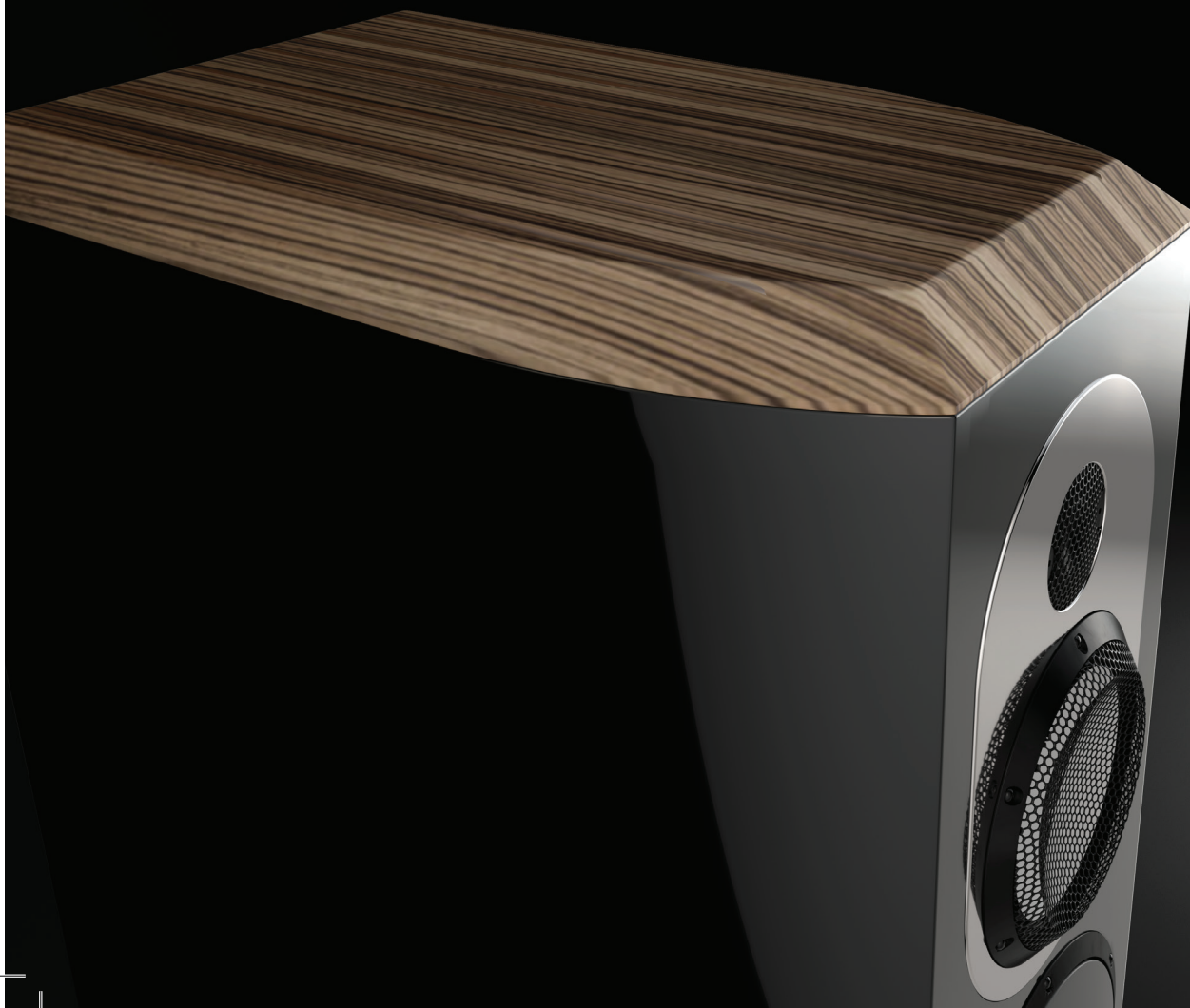
To celebrate the 20th anniversary of Marten, we are proud to release Mingus Twenty, a special edition of Mingus, our first production speaker.

In 1998, Chief Designer Leif Olofsson, designed Mingus. It needed to exist, so we made it. Mingus represented much more than a single product. It embodied a philosophy that powered Marten through two decades.

We wanted to see what we could achieve. This is as true now as it was 20 years ago.

Each time we make a technical improvement, each time we release a new product, we climb towards something greater.

With Mingus Twenty, we have reached a new plateau.




MARTEN
20TH ANNIVERSARY · 2018

A SPEAKER BUILT ON AMBITION.

Mingus Twenty is a celebration of Marten. An accumulation of 20 years of professional experience in speaker design. It's the sum of every great design decision we have made.

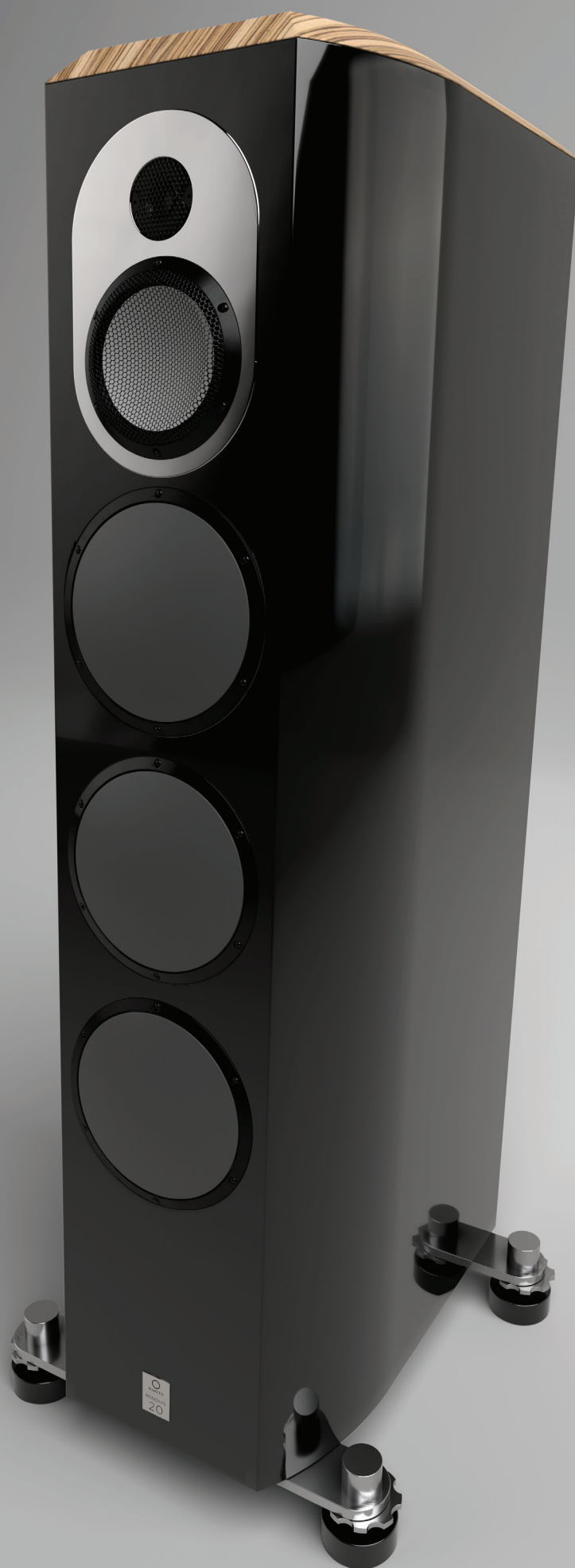
From our first speaker Mingus, each successor has improved on the last. Like natural selection, the strongest qualities have been passed down.

Mingus Twenty is the perfect evolution of Marten product design.



EST
**MADE IN
SWEDEN**
1998

Limited edition of 20 - one pair for each year of Marten since 1998



Solid Zebrano wood top

Jorma Statement cables inside — Newly designed crossover using the finest components ever

MINGUS TWENTY.

WE ASSEMBLE THE IDEAS BEFORE THE PARTS.

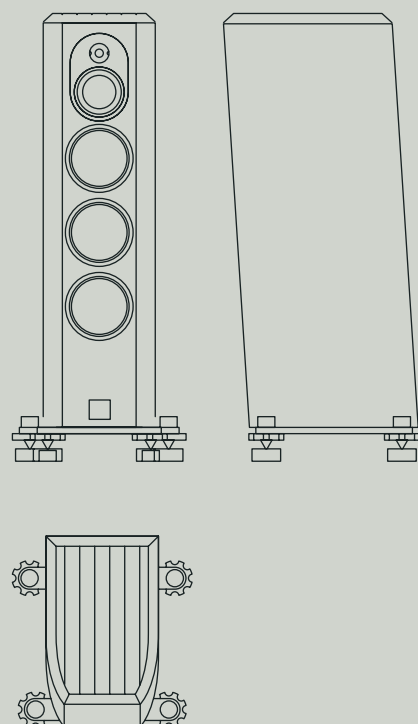
Mingus Twenty employs our market-leading 1st order crossover technique. Combined with Cell drivers from Accuton, this creates flawless time coincidence, as well as perfect time and phase coherence. The result is record-low distortion, delivering the most natural and dynamic sound.

The new, exclusively designed crossover combines the finest components we could find. It is the ultimate expression of our current product design philosophy.

The signal is carried to the drivers by flagship Jorma Statement cables, regarded as the best. A premium model demands the highest quality components. And that's why we use the same diamond tweeter and midrange as the Coltrane series.

Mingus Twenty's sleek design is tapered to be slimmer at the front than the back, which means less surface for sound reflections. It is finished with a solid Zebrano wood top.

This special edition combines decades of know-how with advances in technology that are fast becoming part of Marten's signature build.



Frequency range	24-100000 Hz +-2dB
Power rating	300 W
Sensitivity	87 dB / 1 m / 2.83V
Impedance	6 ohm (3.4 Ohm min)
Type	3-way bass reflex
Drive units	3 x 7" aluminium sandwich 1 x 5" ceramic 1 x 0.75" diamond
Crossover frequency	first order: 370 & 4000 Hz
Terminals	WBT
Internal wiring	Jorma Statement
Cabinet	25-40 mm:s fibre laminate cabinet Solid Zebrano wood top Sheep's wool
Stands	Polished stainless steel with adjustable cog feet Marten pucks and cones
Dimensions (WxHxD)	28 cm x 107 cm x 38 cm (11" x 42.1" x 15")
Net weight	60 Kg (132 lbs)

TECHNICAL SPECIFICATIONS